

Economies in Transition:  
Charting the Path Forward for Coal  
Dependent Regions:  
Lessons Learned from SOAR and IRRRB

Presented to the  
WVU 2014 Energy Conference  
Morgantown, WV

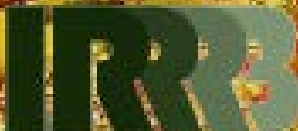
February 24, 2014  
Charles W. Fluharty  
President & CEO  
Rural Policy Research Institute

# The Framework for Regional Rural Innovation



## Critical Internal Considerations

- Wealth Creation and Intergenerational Wealth Retention
- Youth Engagement, Retention, and Leadership Expression
- Social Inclusion and Social Equity



Iron Range Resources & Rehabilitation Board

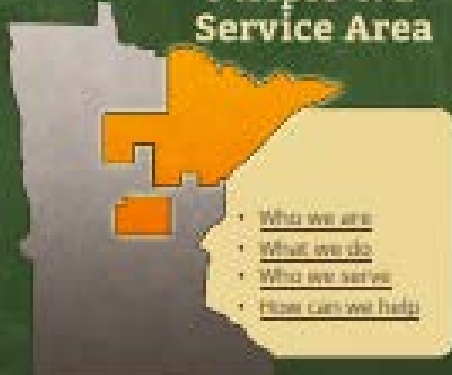


LURE OF OPPORTUNITY! Discover IRRRB's intriguing financial assistance programs!

1 2 3 4

Stop

### "I triple-R B" Service Area



- [Who we are](#)
- [What we do](#)
- [Who we serve](#)
- [How can we help](#)

## Why choose Northeastern Minnesota?

Northeastern Minnesota has exceptional opportunities to live, work and play! We invite you to explore this website to learn about our beautiful region and the endless possibilities.

### Opportunity

Grow your business in northeastern Minnesota. Our welcoming business climate supports growth and prosperity. IRRRB and its partners invest to help your business succeed.

[Business Advantages](#)

### Lifestyle

Live the good life in northeastern Minnesota. Safe, healthy and vibrant communities are surrounded by clear blue lakes and lush green forests right out your back door.

[Community Advantages](#)

### People

Work with us in northeastern Minnesota. Our educated workforce has a rich heritage of being highly skilled, handworking, loyal, and dependable to help businesses succeed.

[Workforce Advantages](#)

## Latest news

### Better IRRRB Task Force to hold Public Input Forums

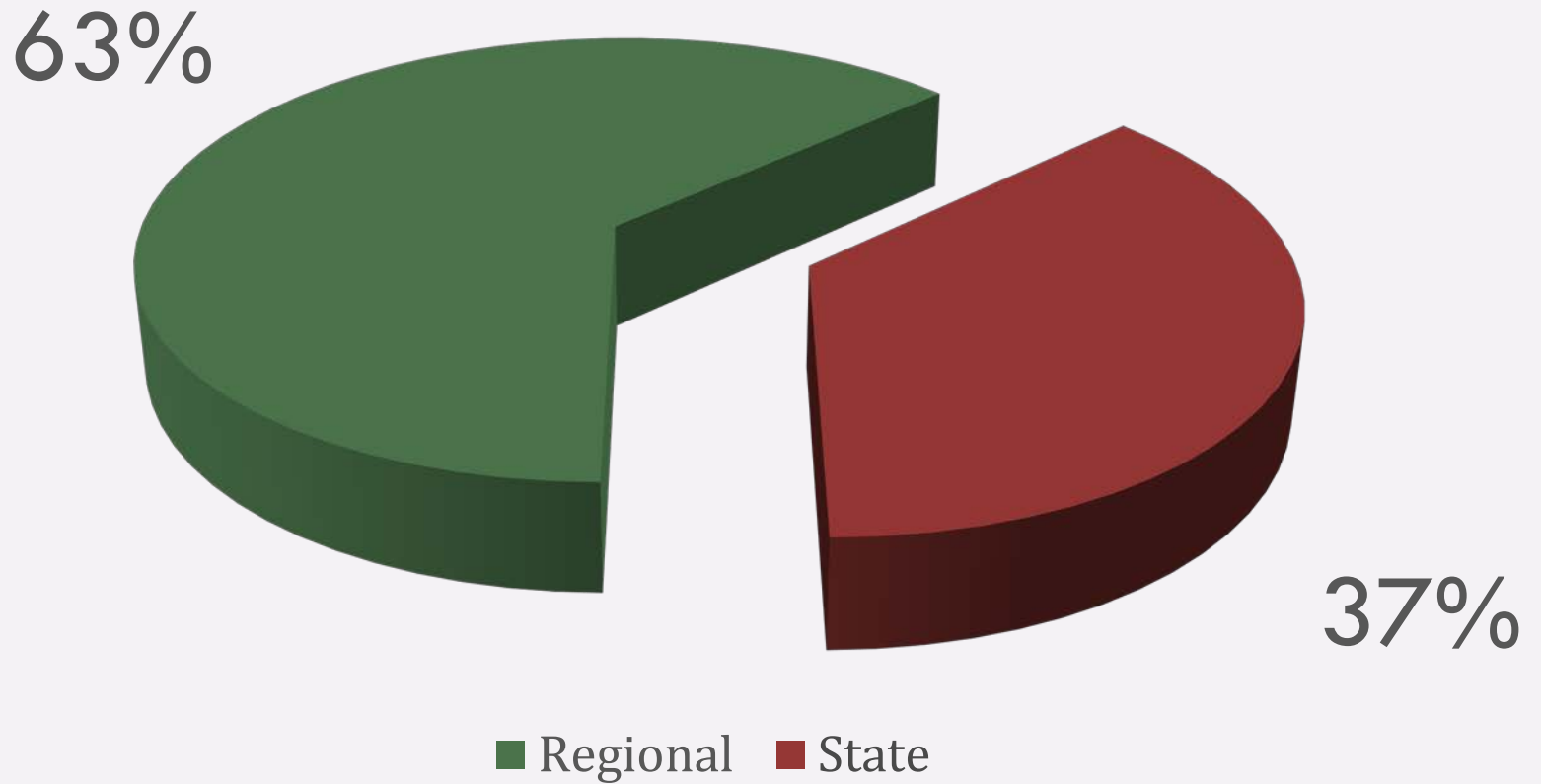
The forums will offer an opportunity for the public to provide feedback and input about new structure and governance models for the Douglas J. Johnson Trust Fund and the IRRRB.

### Watch the fall edition of IRRRB Update!

Highlights include local job creation at Detroit Diesel Remanufacturing, international business connections with Canada and a look at the Residential Redevelopment Program.

[More news](#)

# Mining Tax Revenue



# IRRRB Funds

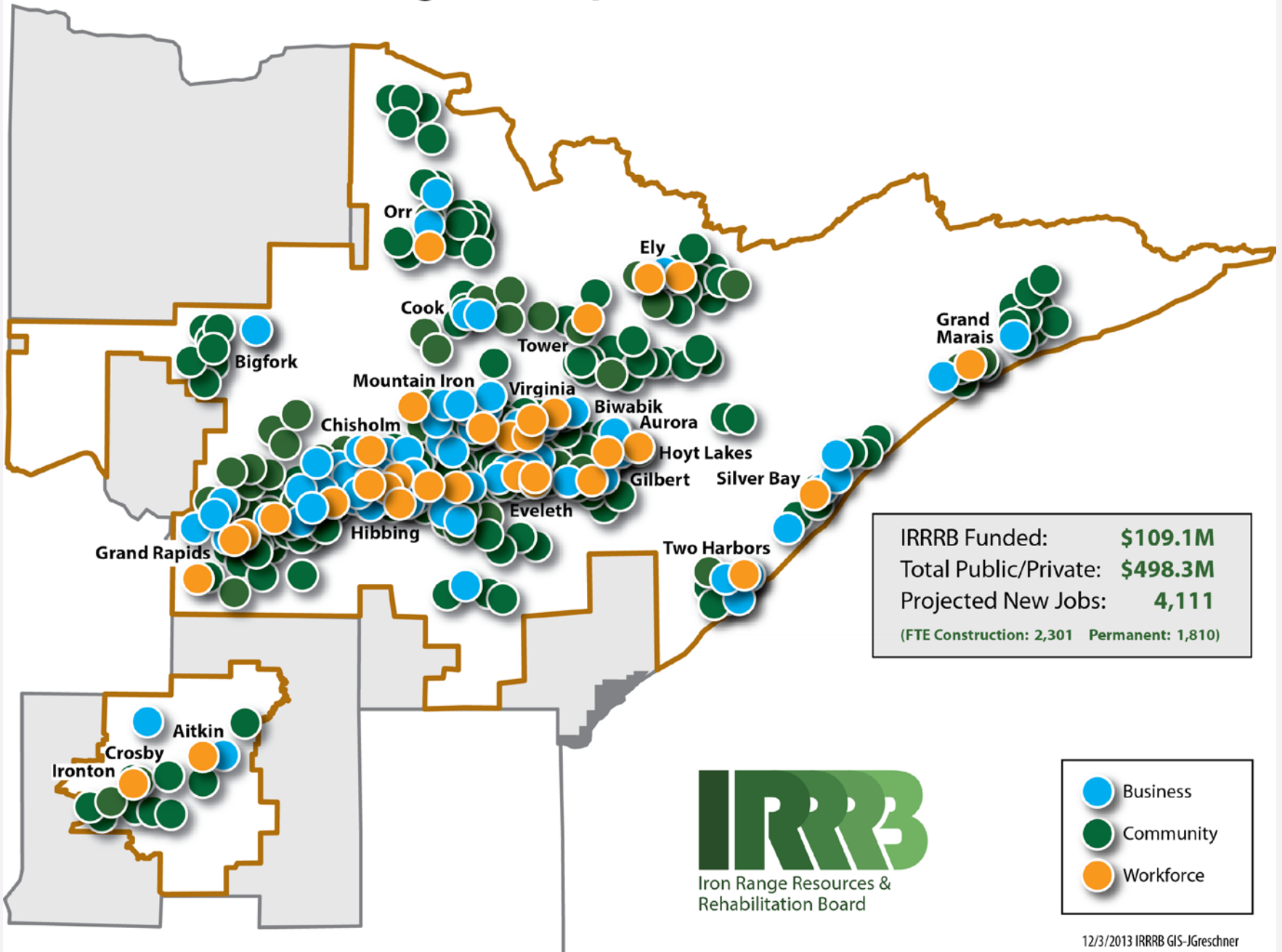
Annual

\$37 Million

Trust Fund

\$142 Million

# Regional Impact Since 2010



IRRRB Funded:	<b>\$109.1M</b>
Total Public/Private:	<b>\$498.3M</b>
Projected New Jobs:	<b>4,111</b>
(FTE Construction: 2,301    Permanent: 1,810)	



	Business
	Community
	Workforce



**SOAR**

Shaping Our Appalachian Region







# Three Critical Questions

- Will public sector champion(s) step forward?
- Will institutional innovator(s) accept the challenge of building new intermediary frameworks?
- Will new constituencies form to jointly support these innovative leaders and institutions?